

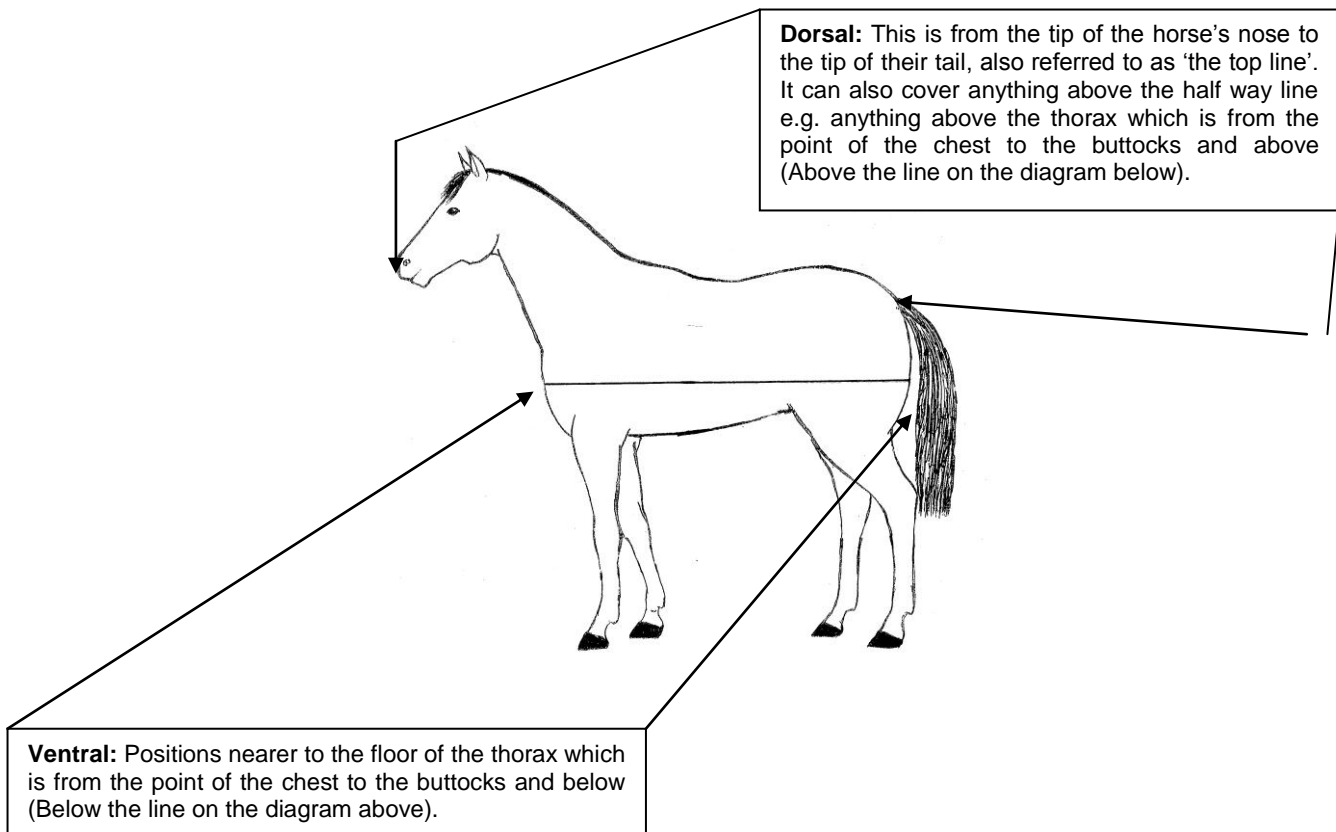


## Anatomical Positions

This describes the anatomical nomenclatures relating to positional adjectives. These are words that describe the whereabouts on the body a particular body part can be located. These terms can be very confusing at times so I have provided diagrams and descriptions to help you understand them.

## Common Terms

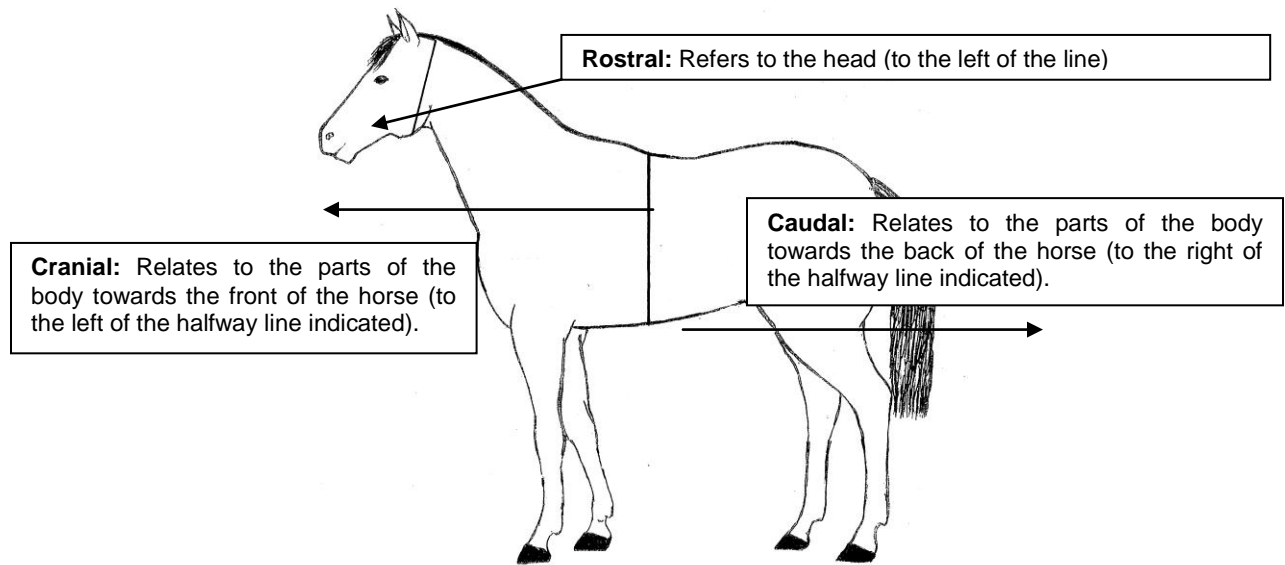
### Body Terms



Anatomical Positions – The Body (top and bottom)

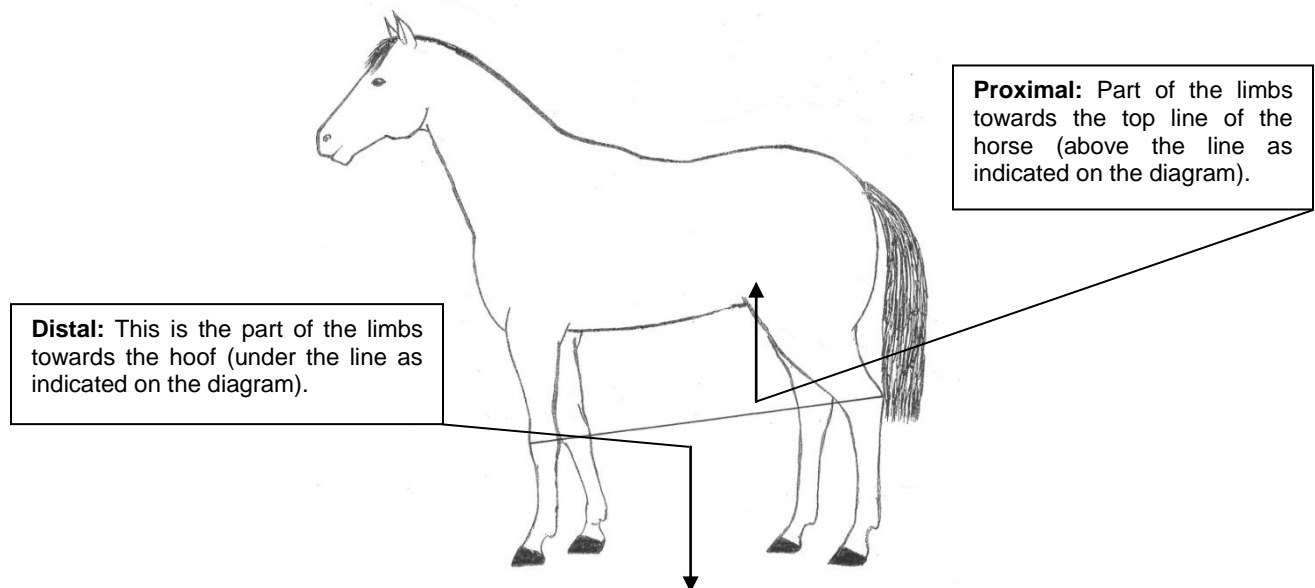


## Chakra Park Kingdom Healing

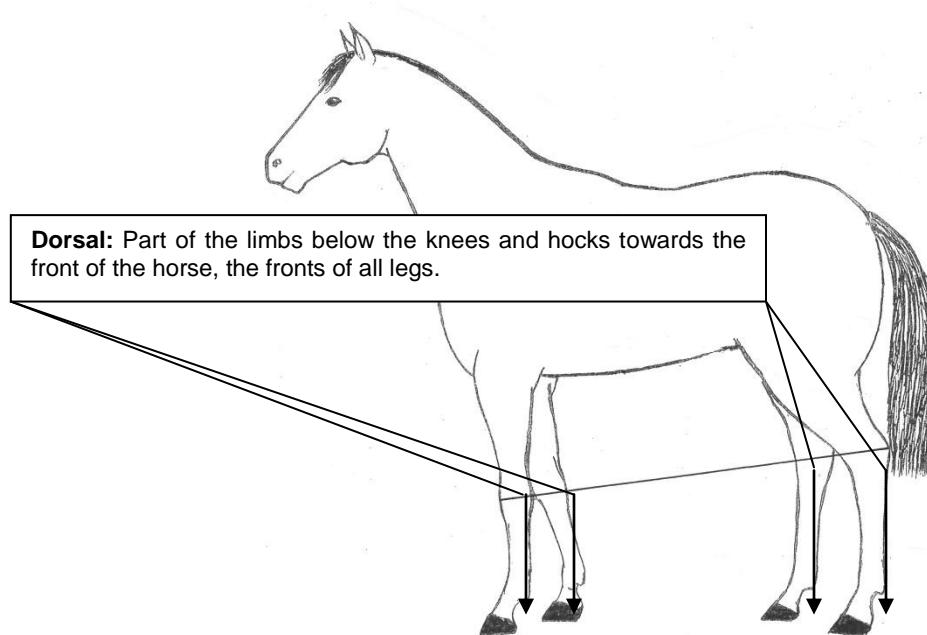


Anatomical Positions – The Body (left, right and the head)

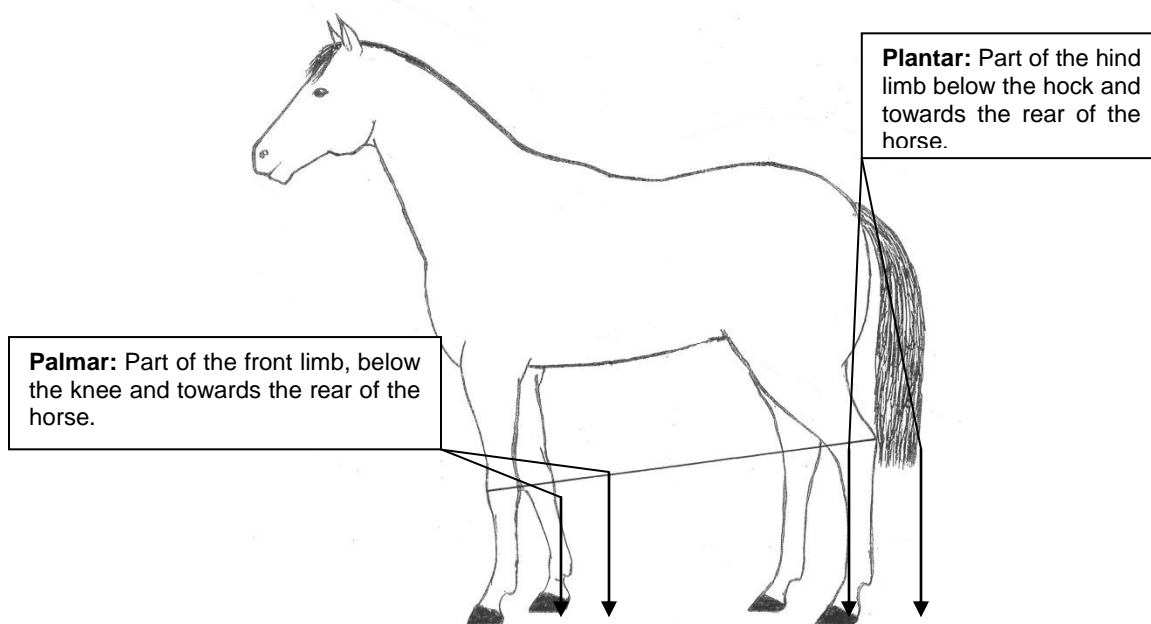
## Limb Terms



Anatomical Positions – Limb Positions - above and below the knees and hocks



Anatomical Positions – Limb Positions - below the knees and hocks (front of the horse)



Anatomical Positions – Limb Positions - below the knees and the hocks (at the rear of the horse)



## Chakra Park Kingdom Healing

**Dorsal:** Part of the limbs below the knees and hocks towards the front of the horse.



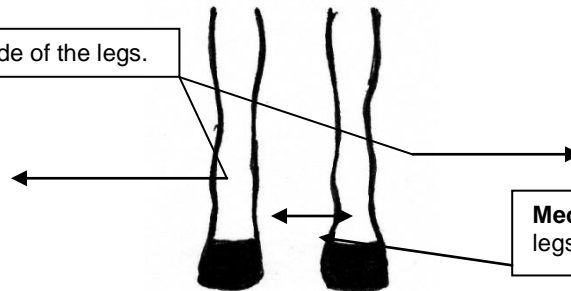
**Palmar:** Part of the front limb, below the knee and towards the rear of the horse.

Anatomical Positions – Limb Positions – Dorsal and Palmer  
(front and back of the foreleg).

This is the front leg looking from the side of the horse.

The term **Dorso-palmar** describes the orientation across both planes. For example the dorso-palmar foot balance means the balance between the front and the back of the hoof.

**Lateral:** Pertaining to the outside of the legs.



**Medial:** Pertaining to the inside of the legs.

Anatomical Positions – Limb Positions – Medial and Lateral (inside and outside of legs)  
This is the front legs looking from in front of the horse.

The term **Medio-lateral** describes the orientation across both planes. For example the medio-lateral foot balance means the balance between the inside and the outside of the hoof.